



J/24 Western Championship 2023

SAILING INSTRUCTIONS (SIs)

Lough Ree Yacht Club

Sat 29th Sun 30th April 2023

PRO Derek Bothwell

The notation '[NP]' in a rule of the SIs means that a boat may not protest another boat for breaking that rule. This changes *RRS* 60.1 (a).

The notation '[DP]' is used as described in the introduction to *The Racing Rules of Sailing*.

1. RULES

1.1 The regatta will be governed by the *rules* as defined in *The Racing Rules of Sailing (RRS)*.

1.2 The prescriptions of Irish Sailing will apply.

1.3 The rules of the International J/24 Class will apply. In particular competitors should note,

- a. Class Rule C.1.1, changing *RRS* 42 (prohibiting hanging off mast or shrouds to promote a roll tack or gybe, and allowing all parts of a main-sheet to be pulled simultaneously)
- b. Class Rule C 2.1 Crew Limitations (See also SI 20.1)
- c. Class Rule C.2.2, changing *RRS* 49 (regulating crew position outside the upper lifeline) will apply.

See also SI 20.3 regarding the use of spare spinnakers.

2. NOTICES TO COMPETITORS

2.1 Notices to Competitors will be posted on the Event WhatsApp group
(see for QR Code see **Appendix A**)

and may be posted on the notice window located in front of Clubhouse.

2.2 The Race Committee may draw attention to Race Signals given on the Committee Boat, and communicate other information on VHF at any time. The Race Committee will transmit on Channel 77 or other such channel as may be displayed on the Committee Boat. Failure to transmit or to receive such communication will not be grounds for redress by a boat. This changes *RRS* 62.1(a).

2.3 The Race Office is located in the L.R.Y.C. Committee Room.

3. SPONSORS' ADVERTISING AND BOW NUMBERS

3.1 World Sailing Regulation 20 will apply.

4. CHANGES TO SAILING INSTRUCTIONS

4.1 Any change to the SIs will be posted before 0900 on the day it will take effect, except that any change to the schedule of races will be posted by 2000 on the day before it will take effect.

5. SIGNALS MADE ASHORE

5.1 Signals made ashore will be displayed on the flagstaff in front of the clubhouse.

5.2 When flag AP is displayed ashore, '1 minute' is replaced with 'not less than 60 minutes' in the race signal AP.

6. SCHEDULE

6.1 Competitors' Briefing will take place at 0945 on Saturday 29th April in front of the clubhouse.

6.2 Schedule of Races: 6 Races are scheduled as follows.

Date	Time of first Warning Signal	Number of Races Scheduled		
Saturday 29 th April	1125	Up to 4		.
Sunday 30 th April	1025	Remaining races to complete the Series	.	.

6.3 The warning signal for each succeeding race will be made as soon as is practicable.

6.4 On Sunday 30th April, the first warning signal of a race will not be made after 1500.

7. CLASS FLAG

7.1 The class flag will be Code Flag J.

8. RACING AREA

8.1 Races will be sailed in the waters North of L.R.Y.C. (see **Appendix B** for Approximate Racing Area) Competitors are advised that it may take up to an hour to get to the Race Area.

9. THE COURSE

9.1 The course will be of the Windward/Leeward type. The diagram in **Appendix C** shows the course, and the order in which marks are to be passed. All marks shall be left to port, unless a gate has been laid at Mark position 3, where boats must pass between the marks.

9.2 No later than the warning signal, the Race Committee will signal the number of rounds to be sailed. Numeral Pennant 2 signifies 2 rounds and Numeral Pennant 3 signifies 3 rounds.

9.3 No later than the warning signal, the Race Committee may display the approximate compass bearing to Mark 1.

9.4 Waterways Ireland Navigation marks Must be obeyed.

10. MARKS

10.1 Mark 1 Red Pyramid type mark. Mark 2, and Mark3, Cylindrical Yellow marks.

10.2 Start Mark (see 11.2 below)

10.3 Finish Mark (see 13.1 below)

11. THE START

11.1 Races will be started in accordance with *RRS* 26.

11.2 The Starting Line will be between a Race Committee Boat's **MAIN Mast** displaying an Orange Flag at the Starboard end of the line and

EITHER

A) a STAFF DISPLAYING an ORANGE FLAG in a rib at the Port end

OR

B) a WHITE spherical buoy at the port end.

11.3 The race committee may attempt to broadcast Individual Recall OCS sail numbers no earlier than one minute after the starting signal, on the designated VHF channel 77.

11.4 When *RRS* 30.4 (Black Flag) applies, and following a general recall, the Race Committee may, in addition to the requirements of *RRS* 30.4, broadcast sail numbers on the designated VHF channel.

11.5 When the Race Committee determines that a boat has not complied with *RRS*s 29.1, 30.3, or 30.4 the Race Committee may broadcast the boat's sail number on the designated VHF channel, no earlier than one minute after the starting signal. Failure to broadcast, or errors in the broadcast, will not be grounds for a request for redress by a boat. This changes *RRS* 62.1(a).

11.6 A boat starting later than 5 minutes after her starting signal will be scored Did Not Start (DNS), without a hearing. This changes *RRS* 63.1, A4 and A5. [NP]

12. CHANGE OF COURSE

12.1 The change will be signaled in accordance with *RRS* 33. Minor adjustments of mark positions will not be signaled by the Race Committee.

12.2 Except at a gate, boats shall pass between the Race Committee vessel signaling the change of the next leg and the nearby mark, leaving the mark to port and the committee vessel to starboard.

13. THE FINISH

13.1 The Finishing Line will be between a Race Committee Boat's **Main Mast** displaying a Blue Flag at the Starboard end and the course side of the finishing mark, a Black Buoy, at the Port end.

13.2 When the Blue Flag is displayed no boat shall pass through the finishing line, in either direction, except to finish. Any boat in breach of this SI shall be scored as DNF without a hearing. This changes *RRS*s 63.1, A4.1 and A5. [NP]

13.3 If a boat intends to lodge a protest she shall inform the Finish boat at the finish.

14. SHORTENING COURSE

14.1 The Race Committee may shorten the course under *RRS* 32.

14.2 When a Race Committee vessel displaying code flag F, making repeated sound signals, is positioned adjacent to a mark of the course, boats, having rounded that mark, shall proceed directly to the Finish line to finish. SI 12.2 will apply.

15. PENALTY SYSTEM

15.1 A boat that has taken a penalty or retired under *RRS* 31 or 44.1 shall complete an acknowledgement form at the Race Office within the protest time limit.

15.2 A boat may take a One Turn Penalty when she has broken a *rule* of Part 2. This changes *RRS* 44.1 & NoR Amendment 12

16. TIME LIMIT

16.1 The time limit for the first boat to sail the course as required by *RRS* 28 and finish is 75 minutes.

16.2 Boats failing to finish within 15 minutes after the first boat sails the course and finishes will be scored Did Not Finish (DNF) without a hearing. This changes *RRS*s 35, 63.1, A4 and A5.[NP]

17. PROTESTS, REQUESTS FOR REDRESS, ARBITRATIONS

17.1 Attachment is the QR code page for competitors to lodge protests

https://www.racingrulesofsailing.org/events/6144/event_links?name=i24-western-championship

17.2 The **Protest Time Limit** is 60 minutes after the last boat has finished the last race of the day.

17.3 On the last day of the event a request for reopening a hearing shall be delivered: -

(a) no later than 30 minutes after the party requesting reopening was informed of the decision.. This changes *RRS 66*.

17.4 **Arbitration** will be available (**see Appendix D**)

18. SCORING

18.1 The Low Points Series of *RRS Appendix A*, will be used.

18.2 Three (3) races are required to be completed to constitute a series.

18.3 One discard will be allowed if four (4) or more races are completed.

18.4 Silver fleet will be decided after Day 1 of racing at the discretion of the Organising Authority.

19. SAFETY REGULATIONS

19.1 All competitors shall wear adequate personal flotation devices at all times when afloat, except briefly while changing or adjusting clothing or personal equipment. Dry suits and wet suits are not adequate personal flotation devices. This changes *RRS 40*.

19.2 A boat that retires from a race shall notify the Race Committee as soon as possible.

20. REPLACEMENT OF CREW OR EQUIPMENT

20.1 Substitution of crew or damaged or lost equipment will not be allowed unless approved by the Race Committee. Requests for substitution shall be made to the committee at the first reasonable opportunity.

20.2 Boats shall sail with their correct sail numbers. Provision to sail under any other number shall be sought in writing from the Race Committee before going afloat and will be granted only in exceptional circumstances. Breaches of this sailing instruction may result in disqualification.

20.3 A spare spinnaker may be carried subject to declaration of its colour/s on the entry form. In the event that the main spinnaker is damaged beyond repair afloat, the spare may be used in subsequent races. Use of the spare spinnaker must be declared by hailing the Committee Boat. This changes Class rule C.10.2.

21. EQUIPMENT AND MEASUREMENT CHECKS

21.1 A boat, crew, equipment and safety equipment may be inspected at any time for compliance with the class rules and SIs

21.2 Boats may be required to undergo safety/measurement checks on random boats assigned at registration.

22. COACH/SPECTATOR BOATS

22.1 Coach boats shall register with the Race Office and display such marking as may be required by the Race Committee.

23. HAUL OUT RESTRICTIONS

23.1 Boats shall not be removed from the water between the preparatory signal of the first race and the end of the regatta. In an emergency, and only following a written request, the Protest Committee may waive this SI.

23.2 In the event of foul weather, the Organising Authority may direct that all boats moored be moved to another berth.

24. DIVING EQUIPMENT AND PLASTIC POOLS

24.1 Underwater breathing apparatus and plastic pools or their equivalent shall not be used between the preparatory signal of the first race and the end of the regatta.

25. RADIO COMMUNICATION

25.1 A boat, while racing, shall neither make radio transmissions nor receive communications not available to all boats. This restriction also applies to mobile telephones, which shall be switched off while racing.

26. INSURANCE

26.1 Each participating boat shall be insured with valid third-party liability insurance with a minimum cover of €3,000,000 per event or the equivalent.

27. PRIZES

27.1 Prize giving will take place as soon as possible following the conclusion of racing.

27.2 Prizes will be awarded to the winners of the event as designated by Organising Authority. The Gold and Silver Fleet Perpetual Trophies remain the property of the National J/24 Class Association of Ireland.

27.3 Prizes will be awarded to the following:

Gold Fleet.	1 st , 2 nd & 3 rd places overall
Silver Fleet:	1 st & 2 nd places overall
K25's	1st place overall

28. LIABILITY

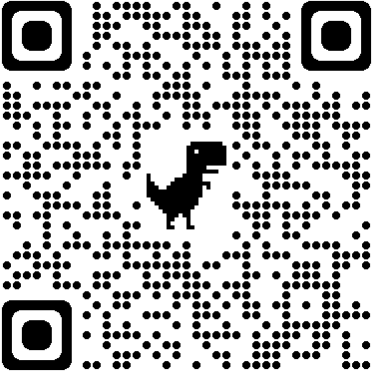
Competitors participate in the event entirely at their own risk – see RRS 3 – Decision to Race.

Lough Ree Yacht Club and The J/24 Class Association will not accept any liability for material damage or personal injury or death sustained in conjunction with or prior to, during, or after the event. Lough Ree Yacht Club, including its officers, employees and agents, the race management team, the support boats and anyone helping to run the event shall not be liable for any loss, damage, death or personal injury however caused to the owner/competitor or crew as a result of their taking part in the event.

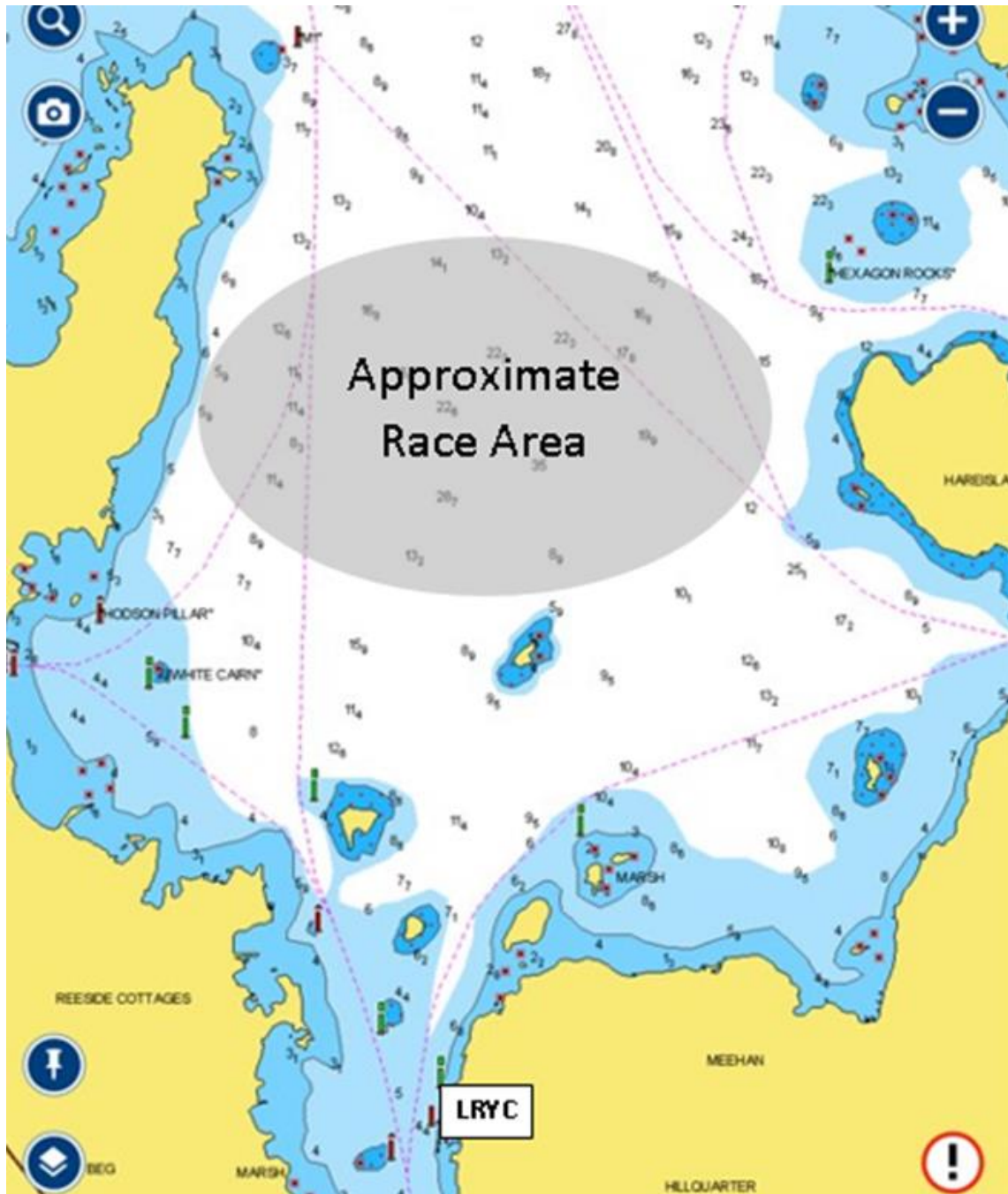
RRS 3, Decision to Race. The safety of a boat and her crew is the sole and inescapable responsibility of the owner, or Skipper, who must do his/her best to ensure that the boat is fully found, thoroughly seaworthy and manned by an experienced crew, each of whom are physically fit and properly clothed to face bad weather. He/she must be satisfied as to the soundness of the hull, steering equipment, rigging and sails and all gear. He/she must ensure that all safety equipment is properly maintained and stowed, and that the crew knows where it is kept and how it is used. Neither the establishment of these special regulations, their use by the sponsoring organisations, nor the inspection of a boat under these regulations, in anyway limits or reduces the complete and unlimited responsibility of the owner. It is the sole and exclusive responsibility of each boat to decide whether or not to start or to continue to race.

APPENDIX A Event Whatsapp Group

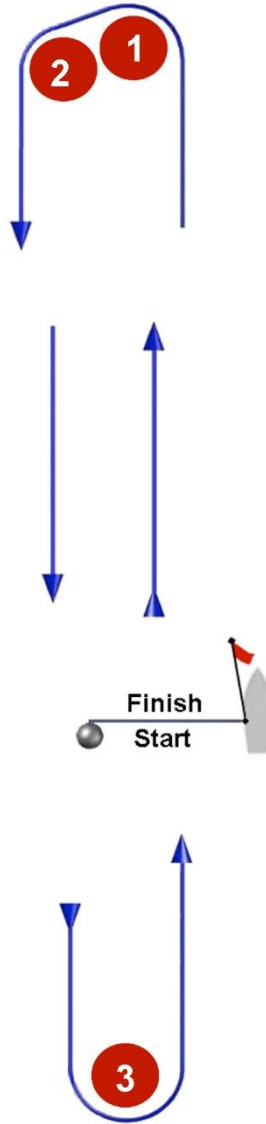
The Event WhatsApp Group can be joined by using the QR code below



APPENDIX B **APPROXIMATE RACE AREA**



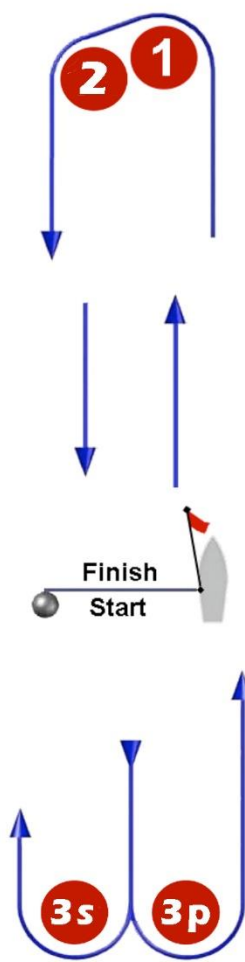
APPENDIX C – COURSE DIAGRAM (not to scale)



Course Mark Rounding Order

2 Laps	Start – 1 – 2 – 3 – 1 – 2 – 3 - Finish
3 Laps	Start – 1 – 2 – 3 – 1 – 2 – 3 – 1 – 2 – 3 - Finish

OR ----- SEE PAGE 9



Course Mark Rounding Order

2 Laps	Start – 1 – 2 – 3s/3p – 1 – 2 – 3s/3p - Finish
3 Laps	Start – 1 – 2 – 3s/3p – 1 – 2 – 3s/3p – 1 – 2 – 3s/3p - Finish

APPENDIX D ----- RRS Appendix T ARBITRATION

B.1 When a protest is lodged, all protests involving a breach of a *rule* of Part 2 or RRS 31 will go through the Arbitration System.

B.2 If the parties and the designated Arbitrator agree that Arbitration is suitable, the Arbitrator will call a hearing conforming to Section B of Part 5 of *the Racing Rules of Sailing*, except that the first sentence of RRS 64.1 will not apply. The arbitration shall be binding.

B.3 When the Arbitrator decides that a boat that is a party to the arbitration hearing has broken a *rule* for which a penalty may be taken at the time of the incident (RRS 44.1), the boat will be offered the opportunity to accept a penalty of 20% calculated according to RRS 44.3(c). No penalty shall result in a score which would exceed that of a disqualification. The protestor will then be invited to withdraw the protest. This changes RRS 63.1.

B.4 When a boat has accepted a penalty under B.3 RRS 64.1b will apply at any subsequent hearing regarding this protest.

B.5 When the arbitrator decides that a boat that is a party to the arbitration hearing has broken a *rule* and that the boat caused injury or serious damage, or gained a significant advantage in the race or series by her breach, that boat will be requested to retire. If the boat does not retire the arbitrator will call a normal protest hearing .

B.6 When there is not an agreement to use Arbitration, or when during or after an Arbitration hearing, the Arbitrator decides that the facts do not allow Arbitration there will be a normal protest hearing, at which the Arbitrator may be a member of the protest committee. RRS 66, Reopening a hearing, will not apply to the arbitration decision.

END OF SIs

dated 28th April, 2023
