



# Mirror Northern Championship 2023

Lough Ree Yacht Club

Sat 20<sup>th</sup> & Sun 21<sup>st</sup> May 2023

**PRO Garrett Leech**

**Organising Authority (OA) is LOUGH REE YACHT CLUB (LRYC)  
in association with the International Mirror Class Association of Ireland (IMCAI)**

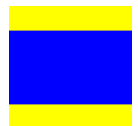
The notation '[NP]' in a rule of the SIs means that a boat may not protest another boat for breaking that rule. This changes *RRS* 60.1 (a).

The notation '[DP]' is used as described in the introduction to *The Racing Rules of Sailing*.

## **SAILING INSTRUCTIONS (SIs)**

The **COMPETITORS' BRIEFING** will be held in front of the clubhouse on **Saturday 20<sup>th</sup> at 11.00**

Additional briefings, ashore or afloat, may be held as necessary and will be notified by hoisting **Flag D** and making one sound signal five minutes before such briefing time.



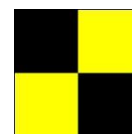
Flag D

### **1. RULES**

- 1 (a) The event is governed by the *rules* as defined in *The Racing Rules of Sailing (RRS)*.
- 1 (b) The Class Rules of the IMCA and IMCAI will apply.
- 1 (c) The NoR, these SIs and any subsequent changes to either of which, will apply.
- 1 (d) In the event of a conflict the SIs will prevail.

## 2. CHANGES TO SAILING INSTRUCTIONS

2 (a) Any change to the SIs will be posted before 10.00 on the day it will take effect, except that any change to the schedule of races will be posted by 20.00 on the day before it will take effect. **Flag L** displayed on the club flagpole denotes that a competitor notice has been posted.



Flag L

## 3. COMMUNICATIONS WITH COMPETITORS

3 (a) Notices to competitors will be posted on the event WhatsApp Group “Mirror Northern Championships 2023”

Mirror Northern  
Championship 2023  
WhatsApp group

and may also be posted on the Official Notice Window situated at the front of the clubhouse.



3 (b) [DP] While racing, except in an emergency, a boat shall not make voice or data transmissions and shall not receive voice or data communications that are not available to all boats. This restriction also applies to mobile telephones.

3 (c) The Race Office is situated in the committee room in the clubhouse.

## 4. CODE OF CONDUCT

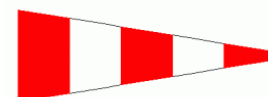
4 (a) [DP] Competitors and support persons shall comply with reasonable requests from race officials.

4 (b) [DP] The rules of Lough Ree Yacht Club will apply.

## 5. SIGNALS MADE ASHORE

5 (a) Signals made ashore will be displayed from the club flagpole situated in front of the clubhouse.

5 (b) When Flag AP is displayed ashore with two sound signals “Racing is postponed & launching is prohibited until it is lowered”. ‘1 minute’ is replaced with ‘not less than 45 minutes’ in the Race Signal AP. This changes *RRS Race Signal AP*



Flag AP (above)

## 6. SCHEDULE OF RACES

6.(a) 6 (Six) Races are scheduled as follows:

Date	Time of first Warning Signal	Number of Races Scheduled		
Saturday 20 <sup>th</sup> May	12.25	Up to 4		
Sunday 21 <sup>st</sup> May	11.10	Remaining races to complete the Series		

6 (b) To alert boats that a race or sequence of races will begin soon, the orange starting line flag will be displayed with one sound at least five minutes before a warning signal is made.

6 (c) The warning signal for subsequent races on each day will be as soon as is practical after the completion of the previous race.

6 (d) On Saturday 20<sup>th</sup> no warning signal will be made after 16.55.

6 (e) On Sunday 21<sup>st</sup> no warning signal will be made after 14.55.

## 7. CLASS FLAG

7 (a) The Class Flag is the Mirror Class Flag



## 8. RACING AREA

8 (a) The intended racing area is approximately 2 Kilometers to the north of the club as shown in **SI Addendum A**.

## 9. COURSES

9 (a) The diagram in **Addendum B** describes the course which will be used.

9 (b) Boats are not required to pass through the Start or Finish lines except when Starting or Finishing.

## 10. MARKS

10 (a) Start see 12 below.

10 (b) Mark 1 will be a Red Pyramid type mark.

10 (c) Marks 2 & 3 will be Yellow Spherical buoys.

10 (d) Finish see 14 below.

## 11. OBSTRUCTIONS

11 (a) Waterways Ireland Navigation Marks must be obeyed.

## 12. THE START

12 (a) Races will be started using *RRS 26* with the warning signal made 5 minutes before the starting signal.

12 (b) The starting line is between the **main mast** of the committee boat **displaying an orange flag** at the starboard end and the course side of the port-end starting mark which will be **EITHER**

1/ a STAFF DISPLAYING an ORANGE FLAG in a rib at the Port end **OR**

2/ a WHITE spherical buoy at the port end.

12 (c) [NP] A boat starting later than 5 minutes after her starting signal will be scored Did Not Start (DNS), without a hearing. This changes *RRS 63.1*, A4 and A5.

12 (d) Sail numbers of boats disqualified under *RRS 30.3* (U Flag) or *RRS 30.4* (Black Flag) may be displayed or may be individually “hailed” at the first windward mark. Boats whose numbers are displayed or hailed shall sail clear of the fleet and retire immediately.

### 13. CHANGE OF THE NEXT LEG OF THE COURSE

13 (a) To change the next leg of the course, the Race Committee will move the original mark (or the finishing line) to a new position.

13 (b) The change will be signaled by displaying Flag C with repetitive sound signals, in accordance with *RRS* 33. Minor adjustments of mark positions will not be signaled by the Race Committee.

13 (c) Boats shall pass between the Race Committee vessel signaling the change of the next leg and the nearby mark, leaving the mark to port and the committee vessel to starboard.

13 (d) When a Race Committee vessel displaying code flag F with repetitive sound signals, is positioned adjacent to a mark of the course, boats, having rounded that mark, shall proceed directly to the Finish line to finish.



Flag C (above)



Flag F (above)

### 14. THE FINISH

14 (a) The Finishing Line will be between a Race Committee Boat's **Main Mast** displaying a Blue Flag at the Starboard end and the course side of the finishing mark, a Black Buoy, at the Port end.

14 (b) When the Blue Flag is displayed no boat shall pass through the finishing line, in either direction, except to finish. Any boat in breach of this SI will be scored as DNF without a hearing. This changes *RRSs* 63.1, A4.1 and A5.

14 (c) If a boat intends to request a hearing she shall inform a Committee Boat at the finish.

14 (d) A Shortened Course will be finished at a mark of the course between the mark and a staff displaying Code Flag S on a Committee Vessel.



Blue Flag



Flag S

### 15. PENALTY SYSTEM

15 (a) Penalties as per *RRS* 44 (Two-Turns Penalty)

### 16. TIME LIMITS AND TARGET TIMES

16 (a) The Target Time for each race is 45 mins. This target is a guide and will not be grounds for a hearing or redress.

16 (b) Boats failing to finish within 10 minutes after the first boat may be scored as per their position at their last mark or 'Did Not Finish' without a hearing. This changes *RRS* 35, A4 and A5.

16 (c) If no boat has passed Mark 1 of the course within 20 minutes of the starting signal the race will be abandoned. This amends SI14.1 of the IMCAI Championship SIs 2007 and *RRS* 35.

## **17 HEARING REQUESTS**

17 (a) Hearing Request forms are available at the Race Office in LRYC.

17 (b) The Time Limit for delivery of Hearing Requests is 90 minutes after the last boat has finished the last race of the day or 90 minutes after the last race has been abandoned. The Time Limit may only be posted on the Official Notice Window.

17 (c) Hearing Requests shall be delivered to the Race Office within the time limit.

17 (d) Notices will be posted no later than 45 minutes after the Hearing Request Time Limit to inform competitors of hearing times in which they are parties or named as witnesses. The location of the hearing will be in the Committee Room in the clubhouse.

17 (e) On the last day of the event a request for re-opening a hearing shall be delivered:

(1) Within the hearing request time limit if the party requesting re-opening was informed of the decision on the previous day.

(2) No later than 30 minutes after the party requesting re-opening was informed of the decision on that day.

## **18. SCORING**

18 (a) The minimum number of races required to constitute a championship will be two races.

18 (b) When four or more races have been completed a boat's score will be the total of her race scores excluding her worst score.

## **19. SAFETY REGULATIONS**

19 (a) Competitors must always wear life jackets or other adequate personal buoyancy when afloat. This changes *RRS 40*.

19 (b) All boats must carry the required safety equipment specified by the IMCAI.

Safety checks may be performed by the IMCAI, shore master and/or race committee.

19 (c) Sailors shall comply with the instructions of the shore master.

19 (d) A boat that retires from a race shall notify the Race Committee as soon as is possible.

19 (e) The OA may stop a boat launching or require it to return ashore if it considers the boat, its equipment or crew are not adequate for the likely conditions or for any other reason. The decision is final and shall not be grounds for redress.

19 (f) Competitors in difficulty shall obey any instruction given by a rescue boat crew.

## **20. REPLACEMENT OF CREW OR EQUIPMENT**

20 (a) Substitution of crew will not be allowed without approval of the Race Committee prior to using such replacement crew. Substitute helms are not permitted. Requests for substitution shall be made in writing.

20 (b) Substitution of damaged or lost equipment will not be allowed unless authorised by the Race Committee. Requests for substitution shall be made in writing.

20 (c) Permission may be given verbally by the race committee on the water.

## **21. EQUIPMENT AND MEASUREMENT CHECKS**

21 (a) Each boat shall carry the registered number of that boat in compliance with *RRS 77*.

Any competitor wishing to sail with a sail number different from the boats registered number shall apply, in writing and in advance, to the Race Committee for permission to use such different number. Permission, once an event has commenced, will only be granted in exceptional circumstances (and may be requested/given verbally where a change of sail is required by reason of gear failure or damage).

21 (b) A boat or equipment may be inspected at any time for compliance with the class rules and sailing instructions. On the water, a boat can be instructed by a Race Committee Measurer to proceed immediately to a designated area for inspection.

**22. SUPPLIED BOATS** ----- Not applicable at this event

## **23. OFFICIAL VESSELS**

23 (a) Boats designated by the Race Committee to lay marks, perform race management and rescue duties, to carry umpires/juries, to carry race committee personnel and authorised media representatives are deemed to be Official Vessels.

## **24. SUPPORT TEAMS**

24 (a) All other craft not competing in the event, including (but not limited to) those of team leaders, coaches, parents/guardians and supporters, are deemed to be Support Boats. Support boats must keep clear of the race area from the time of the warning signal until all boats have finished or retired or the Race Committee signals a postponement, general recall or abandonment and act in accordance with the instructions of the Race Committee. Failure to do so may result in the boat(s) being supported being penalised or disqualified.

## **25. TRASH DISPOSAL**

25 (a) No trash is to be disposed of overboard. All trash is to be brought ashore and disposed of appropriately.

**26. BERTHING** ----- Not applicable at this event.

**27. HAUL OUT RESTRICTIONS** ----- Not applicable at this event.

**28. DIVING EQUIPMENT AND PLASTIC POOLS** ----- Not applicable at this event.

## **29. PRIZES**

29 (a) Prizegiving will be on Sunday at the Clubhouse as soon as is possible following racing when all competitors are ashore, and the final results are available.

29 (b) Prizes will be awarded at the discretion of the OA.

### 30. RISK STATEMENT

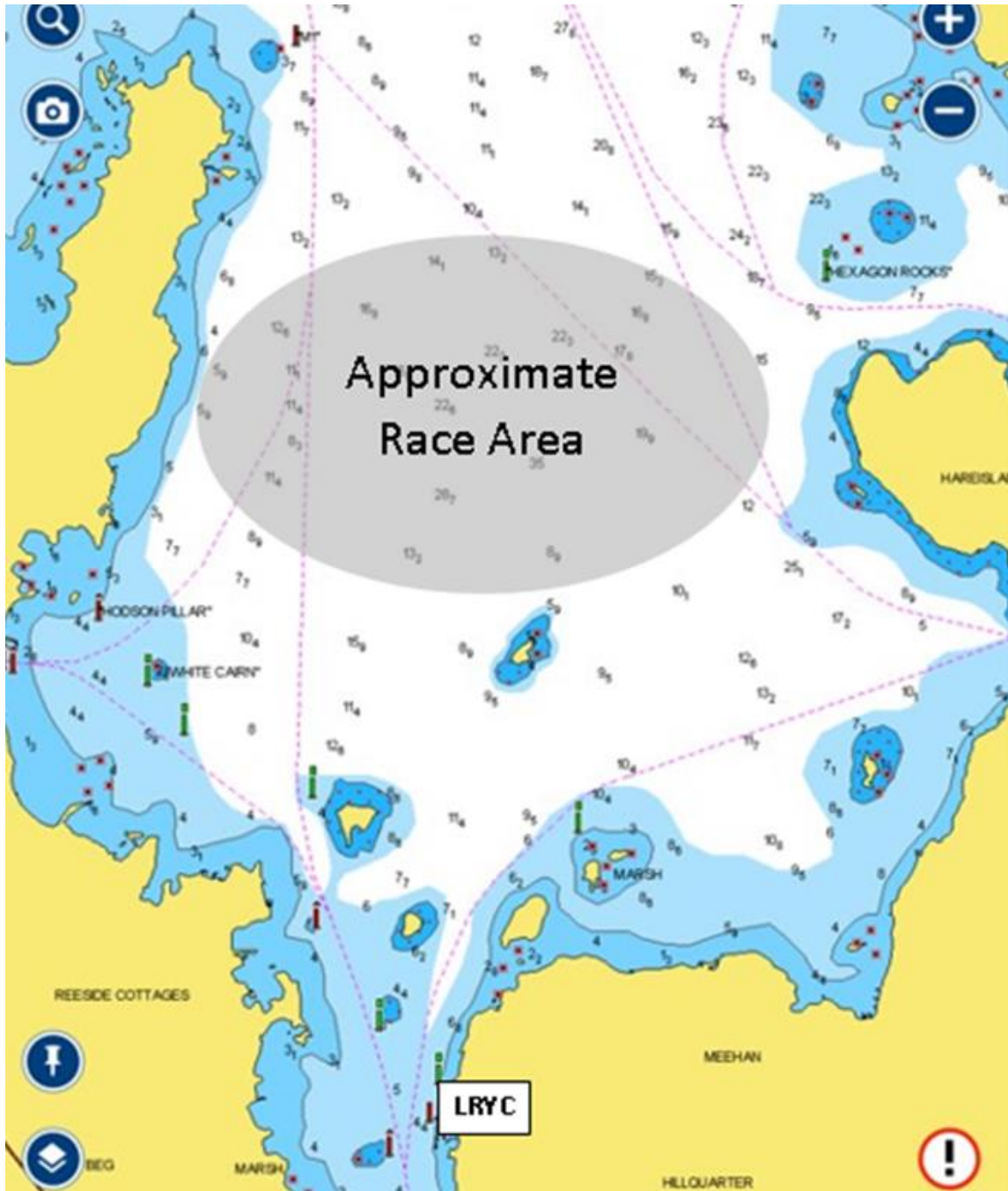
#### 30.1 **RRS 3 states:**

*'The responsibility for a boat's decision to participate in a race or to continue to race is hers alone.'* By participating in this event each competitor agrees and acknowledges that sailing is a potentially dangerous activity with inherent risks. These risks include strong winds and rough seas, sudden changes in weather, failure of equipment, boat handling errors, poor seamanship by other boats, loss of balance on an unstable platform and fatigue resulting in increased risk of injury. ***Inherent in the sport of sailing is the risk of permanent, catastrophic injury or death by drowning, trauma, hypothermia or other causes'***

### 31. INSURANCE

31.1 All boats shall be insured with valid third-party liability insurance. The minimum indemnity limit shall be €3 million (or equivalent) per incident valid for the duration of the event.

**ADDENDUM A**  
**APPROXIMATE RACE AREA**





## ADDENDUM B ----- COURSE

- (a) All marks are rounded to Port.
- (b) Boats are not required to pass through the Start or Finish Lines except when Starting or Finishing.
- (c) When the Blue Flag is displayed no boat shall pass through the finishing line, in either direction, except to finish. Any boat in breach of this SI will be scored as DNF without a hearing. This changes RRSs 63.1, A4.1 and A5.

COURSE  
START - 1 - 2 - 3 - 1 - 3 - 1 - 2 - 3 - FINISH

