

LOUGH REE YACHT CLUB
FOUNDED 1770



IDRA 14' NATIONAL CHAMPIONSHIPS 2023

23rd August – 26th August 2023

The Organising Authority (OA) for this event is Lough Ree Yacht Club (LRYC)
in conjunction with the IDRA 14' Class Association.

The Regatta will take place on Lough Ree and the River Shannon, based at the Club.

SAILING INSTRUCTIONS (SIs)

Race Officer:	Alan Algeo PRO with Ian Sargent
Hon. Scorekeeper:	Eileen Browne
Registration and Late Entries :	Rebecca Sargent
Hearing Convenor:	Neil Flannery
National Judge (Arbitrator):	David Dickson with Ian Sargent
Technical Committee Chairman:	Donal Heney
Club Flagship:	<i>"Tom Dennehy"</i>

REGISTRATION will take place in the clubhouse.

Wednesday 23rd 16.00 to 21.00 and

Thursday 24th 10.00 to 12.15.

COMPETITORS' BRIEFINGS WILL TAKE PLACE IN FRONT OF THE CLUBHOUSE

A Practice Race Briefing is scheduled for Wednesday 23rd at 18.00.

The Championship & Crews Race Briefing will be on Thursday at 12.30.

'[DP]' in a rule means that the penalty for a breach of the rule may, at the discretion of the Protest Committee, be less than disqualification. This changes RRS 60.1(a).

1 RULES

- 1.1 The event is governed by the rules as defined in *The Racing Rules of Sailing*.
- 1.2 IDRA 14' Class Rules will apply.
- 1.3 In the event of a conflict between the NoR and the SIs, the SIs will prevail.

2 CHANGES TO SAILING INSTRUCTIONS (SIs)

- 2.1 Any change/s to the SIs will be posted prior to such time as the course of the first race affected by such change/s is posted, except that any change which brings forward the schedule of the first race of a particular day will be posted by 21.00 on the day before it takes effect.
- 2.2 Onshore, the displaying of Code Flag L, on the day such a change/s is/are notified, will signal changes to the SIs.

3 COMMUNICATIONS WITH COMPETITORS

- 3.1 Notices to competitors will be posted on the official notice board located in the front window of the clubhouse and may also be posted using the event WhatsApp Group "IDRA 14' NATIONALS 2023 LRYC" which can be joined by scanning the QR code or link below :

IDRA 14' NATIONALS
2023 LRYC
WhatsApp group



or by using the link <https://chat.whatsapp.com/G9Zxyr5LE78ESBzTgpMi15>

- 3.2 [DP] While racing, except in an emergency, a boat shall not make voice or data transmissions and shall not receive voice or data communication that is not available to all boats. This also applies to mobile 'phones.

4 CODE OF CONDUCT

- 4.1 [DP] Competitors and support persons shall comply with reasonable requests from Race Officials.

5 SIGNALS MADE ASHORE

- 5.1 Signals made ashore will be displayed on the flagstaff in front of the clubhouse.
- 5.2 When Code Flag AP is displayed ashore, '1 minute' is replaced with not less than 60 minutes in Race Signals AP.

6 SCHEDULE OF RACES

6.1 6 (Six) Championship Races and 1 (One) Crews Race are scheduled.

6.2 All times in the schedule contained in the NoR, SIs and elsewhere during this event are warning signals.

Date	Time of first Warning Signal	Number of Races Scheduled	
Wednesday 23rd	1845	1	Practice Race
Thursday 24 th	1400	2 (Back to Back)	Championship Races
Friday 25 th	1200	2 (Back to Back) With 3 rd Back to Back	Championship Races Crews Race
Saturday 26 th	1200	2 (Back to Back)	Championship Races
Sunday 27 th	TBA	ONLY if necessary Remaining races to complete the Series	

6.3 With the exception of the first scheduled race, which will not be brought forward, the Race Committee reserves the right to alter the schedule of races, as they see fit, to ensure enough races are completed.

6.4 Should it be necessary to sail on Sunday no warning signal will be made after 14.55.

7 CLASS FLAGS

7.1 The Class Flag is Code Flag 'Q'

8 RACING AREA

8.1 The intended Approximate Racing Area is identified on the map in Addendum A.

9 COURSES

9.1 Championship courses will be either of the Triangular (Olympic) or Windward / Leeward type as described in Addendum B.

9.2 The course type signal for each race will be indicated on the Flagship no later than the Warning Signal. (Code Flag "O" for Triangular (Olympic) OR Code Flag "W" for Windward Leeward")

9.3 Afloat, before a race starts, a Committee Vessel underway displaying Code Flag L requests competitors to come within hail and/or follow it.

10 MARKS

10.1 Mark 1 will be an Orange Pyramidal Mark. Marks 2 and 3 will be Yellow Spherical Marks.

10.2 Other marks are as described in SI12 "The Start" and SI 14 "The Finish".

10.3 The Crews Race may have different marks.

11 OBSTRUCTIONS

- 11.1 Waterways Ireland Navigation (excluding the green middle ground stake, situated south of Little Yellow Island) shall be regarded as marks on the course and the navigation must be observed except where otherwise indicated on the Course.

12 THE START

- 12.1 To alert boats that a race or sequence of races will begin soon the Orange starting line flag may be displayed, with one sound signal, at least 5 (five) minutes before a warning signal is made.
- 12.2 Races will be started using *RRS 26* with the warning signal made 5 (five) minutes before the starting signal.
- 12.3 The Starting Line is between a mast or staff, which may be displaying an Orange flag on the Committee Vessel at the starboard end, and the port-end starting mark being a staff flying an orange flag in a rib, OR may be a white spherical buoy.
- 12.4 A boat that does not start within 10 minutes after her starting signal will be scored DNS without a hearing. This changes *RRS A5.1* and *A5.2*.

13 CHANGE OF THE NEXT LEG OF THE COURSE

- 13.1 To change the next leg of the course, the Race Committee may move the original mark or the finishing line to a new position. A Committee Vessel at the previous mark may indicate such a change by flying Code Flag C and making repeated sound signals. This changes *RRS 33*. A boat shall not request redress under *RRS 60.1 (b)* because of an action or lack of action by the Race Committee under this instruction.
- 13.2 A boat located near a mark of the course making repetitive sounds and flying Code Flag "F" will signify that after rounding the mark boats shall proceed directly to the finish line crossing it from the direction of said mark. This changes and amends *RRS Race Signals*.

14 THE FINISH

- 14.1 The finishing line will be between a mast or staff displaying a blue flag, on a Committee Vessel at the starboard end and at the port end a Black mark.
- 14.2 N.B. The start Mark for a subsequent race may be laid as boats are finishing.
- 14.3 In addition to *RRS 32*, the Race Committee may also award a finishing score to a boat that is still racing by displaying to her from a Committee Vessel (which may be in motion) Code Flag W with one sound signal. A boat so notified is no longer required to sail the course, shall stop racing and shall return to the starting area, or return ashore if there is no more racing that day. A finishing score under this sailing instruction will be the score she would have received had she sailed the course and finished within any time limit, without gaining or losing any place. However, when two or more boats that are overlapped are notified, they will be scored as if they were tied. The decision by the Race Committee to use this procedure or not to use it shall not be grounds for requesting redress. This changes *RRS 60.1(b)* and *62.1(a)*.

- 15 Not used.

16 TIME LIMITS

- 16.1 The time limit for each race will be 1 hour 30 minutes.
Provided that a boat finishes within the time limit, all other boats will be allowed an additional 20 minutes to complete the course from the time the first boat finishes.

17 HEARING REQUESTS

- 17.1 A boat intending to protest or seek redress shall notify the Race Officer immediately after finishing or, if she does not finish, shall notify the Protest Convenor or another member of the Race Committee, immediately on coming ashore. This changes *RRS* 61.
- 17.2 Measurement protests will only be accepted from either the Race Committee or Official Measurer. This changes *RRS* 60.1(a).
- 17.3 Hearing request forms are available from the Race Office in the clubhouse.
- 17.4 Duly completed hearing request forms shall be delivered to the Protest Convenor, his assistant/s or to another member of the Race Committee
- 17.5 The Protest Time Limit is 60 minutes after the last boat has finished each race or in the case of back-to-back races, 60 minutes after the last boat finishes the later race.
- 17.6 Notices will be posted as soon as is practicable after the Protest Time Limit to inform competitors of hearings in which they are parties or named as witnesses. Hearings will be held in the Protest Room, located at the Committee Room in the clubhouse.
- 17.7 Notices of protests by the Race Committee or Protest Committee will be posted to inform boats under *RRS* 61.1(b).
- 17.8 Arbitration – Appendix T may apply. If a party is not present at an arbitration meeting, any party that is present may take a Post-Race Penalty at any time until the Protest Committee has completed taking evidence. This changes *RRS* T1 (a).
- 17.9 On the last scheduled day of racing a request for reopening a hearing shall be delivered:
 - (a) no later than 10.00 if the requesting party was informed of the decision on the previous day;
 - (b) no later than 30 minutes after the requesting party was informed of the decision on that day.This changes *RRS* 66.
- 17.10 On the last scheduled day of racing a request for redress based on a Protest Committee decision shall be delivered no later than 30 minutes after the decision was posted. This changes *RRS* 62.2.

18 SCORING

- 18.1 3 (Three) races are required to be completed to constitute a Championship Series. If the required 3 (three) races are not completed the Championship is null and void.
- 18.2 When fewer than 4 races have been completed, a boat's series score is the total of her race scores.
- 18.3 When 4 (four) or more races have been completed, a boat's series score is the total of her race scores excluding her worst score.
- 18.4 Boats that fail to finish (DNF) shall be awarded points equal to one more than the number of starters in that particular race.
Disqualified boats (DSQ) shall be awarded points equal to two more than the number of starters in that particular race.
Non-starters shall be awarded points equal to three more than the number of entrants in the Championship.
Items under SI 18.4 amend *RRS* A5.2

19 SAFETY REGULATIONS

- 19.1 **RRS 40 Personal flotation devices ("PFDs") always applies while racing. Flag Y will not be displayed. This changes RRS 40. Irish Law requires the wearing of PFDs at all times on any pleasure craft shorter than 7m in length.**
- 19.2 [DP] A boat that retires from a race shall notify the Race Committee at the first reasonable opportunity.

20 REPLACEMENT OF CREW OR EQUIPMENT

- 20.1 [DP] Substitution of damaged or lost equipment is not allowed unless authorised in writing by the Race Committee. Requests for substitution shall be made to the committee at the first reasonable opportunity, which may be after the race.

21 EQUIPMENT AND MEASUREMENT CHECKS

- 21.1 A boat or equipment may be inspected at any time for compliance with the Class Rules.

22-24 Not used.

25 TRASH DISPOSAL

- 25.1 Trash may only be placed aboard official vessels or taken ashore for disposal.

26-28 Not used.

29 PRIZES

- 29.1 Prizes will be given as in the NoR.

30 RISK STATEMENT

- 30.1 **RRS 3 states: 'The responsibility for a boat's decision to participate in a race or to continue to race is hers alone.'** By participating in this event each competitor agrees and acknowledges that sailing is a potentially dangerous activity with inherent risks. These risks include strong winds and rough seas, sudden changes in weather, failure of equipment, boat handling errors, poor seamanship by other boats, loss of balance on an unstable platform and fatigue resulting in increased risk of injury. **Inherent in the sport of sailing is the risk of permanent, catastrophic injury or death by drowning, trauma, hypothermia or other causes.**

31 INSURANCE

- 31.1 Each participating boat shall be insured with valid third-party liability insurance with a minimum cover of € 3.0M per incident or the equivalent.

END OF SIs (See ADDENDUMS A & B ON NEXT PAGES)

OTHER INFORMATION

THE EXECUTIVE COMMITTEE OF LRYC HAVE ASKED THAT COMPETITORS AND GUESTS BE MADE AWARE OF THE FOLLOWING :

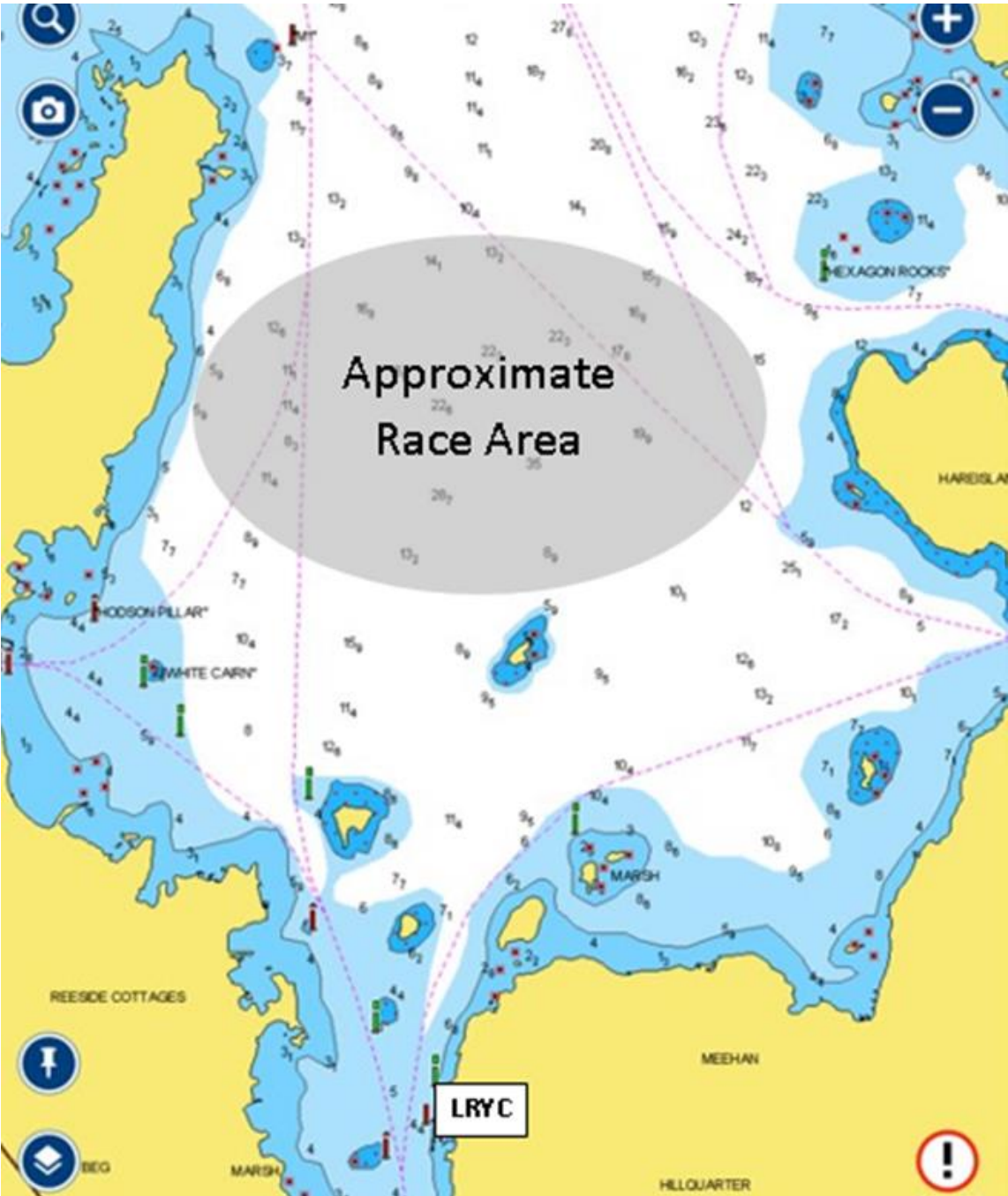
ONLY BEVERAGES PURCHASED FROM THE CLUB BAR MAY BE CONSUMED ON THE CLUB VERANDA AND/OR IN THE CLUBHOUSE

DOGS ARE NOT PERMITTED ON THE VERANDA OR IN THE CLUBHOUSE AT ANY TIME AND MUST ALWAYS BE KEPT ON A LEAD.

THE IDRA 14' CLASS ASSOCIATION

WISHES TO THANK THE COMMODORE, COMMITTEE AND RACE MANAGEMENT TEAM OF LOUGH REE YACHT CLUB FOR FACILITATING THIS EVENT.

ADDENDUM A APPROXIMATE RACE AREA



ADDENDUM B COURSES

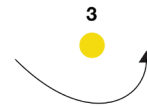
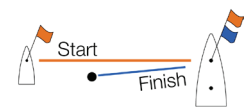
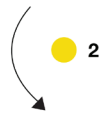
The courses below are a copy of those used in the FYC IDRA 14' 2022 National's Courses with some highlighted additions

Olympic Course



Code flag "O" will be displayed on Flagship.

Course: Start - 1 - 2 - 3
1 - 3,
1 - 2 - 3
Then to Finish.

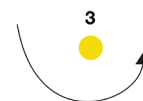
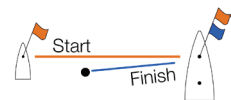


Windward/Leeward Course



Code flag "W" and will be displayed on Flagship.

Course: Start - 1 - 2 - 3,
1 - 2 - 3,
1 - 2 - 3,
Then to Finish.



In the event of a wind shift the Race Committee may move the marks (without signalling) to keep the integrity of the course - this amends RRS 33.