



LOUGH REE YACHT CLUB  
FOUNDED 1770



# Irish International 420 Association Ulster Regional Championship

4<sup>th</sup> & 5<sup>th</sup> November 2023

Lough Ree Yacht Club

Ballyglass, Hillquarter, Coosan, Athlone, N37 K257

## Sailing Instructions (SIs)

**The Organising Authority (OA) is the Lough Ree Yacht Club (LRYC)  
in association with the Irish International 420 Association ("The Association").**

### BRIEFING

**The briefing for competitors will take place at the LRYC clubhouse on  
Saturday 4<sup>th</sup> at 09.30.**

'[DP]' in a rule means that the penalty for a breach of the rule may, at the discretion of the Protest Committee, be less than disqualification. This changes RRS 60.1(a).

#### 1. RULES

- 1.1. The event is governed by the *rules* as defined in *The Racing Rules of Sailing*.

#### 2. CHANGES TO SAILING INSTRUCTIONS

- 2.1. Any changes to the SIs will be posted on the Official Regatta Notice Board and may be posted on the event WhatsApp group. (See SI 3.1 & 3.2 )
- 2.2. Any change to the SIs will be posted no later than 90 minutes before the first scheduled warning signal on the day it will take effect, except that any change to the schedule of races of a day will be posted by 20.00 on the day before it will take effect.



LOUGH REE YACHT CLUB  
FOUNDED 1770



### 3. COMMUNICATIONS WITH COMPETITORS

- 3.1. Notices to Competitors will be posted on the Official Notice Board located on the front window of the clubhouse and may also be posted using the event WhatsApp Group “420 Ulster Championship 2023”.

which can be joined by using the link :

<https://chat.whatsaaa.com/J6iRQdCLLJsbiYKa>

or by scanning the QR code:

420 Ulster Championship 2023  
WhatsApp group



- 3.2. The Race Office is located at the Committee Room in the clubhouse at LRYC.
- 3.3 [DP] While racing, except in an emergency, a boat shall not make voice or data transmissions and shall not receive voice or data communication that is not available to all boats. This also applies to mobile ‘phones.

### 4. CODE OF CONDUCT

- 4.1 [DP] Competitors and support persons shall comply with reasonable requests from Race Officials.

### 5. SIGNALS MADE ASHORE

- 5.1. Signals made ashore will be displayed from the flagpole in front of the LRYC Clubhouse.
- 5.2. When flag AP is displayed ashore, ‘1 minute’ is replaced with ‘not less than 45 minutes in *Race Signals AP*.



LOUGH REE YACHT CLUB  
FOUNDED 1770



## 6. SCHEDULE OF RACES

6.1 Six races are scheduled.

Day	First Warning Signal	Number of Races
Saturday 4 <sup>th</sup> November	11.00	Up to 4
Sunday 5 <sup>th</sup> November	11.00	<b>Remaining races to complete the Series</b> No 1 <sup>st</sup> Warning Signal after 15.30 (see NoR 5.2)

6.2 To alert boats that a race or sequence of races will begin soon, the Orange Starting Line Flag will be displayed with one sound signal at least five minutes before a warning signal is made.

6.3 Races, subsequent to the first race on each day, will start as soon as possible after the finish of the previous race.

## 7 CLASS FLAG

7.1 The Class Flag is The International 420 Association Class Flag.

## 8 RACING AREA

8.1 **SI Addendum 1** shows the location of the intended race area approximately 400m north of the LRYC Launching Area .

## 9 COURSE

9.1 The diagram in **SI Addendum 2** – describes the course, the order in which marks are to be passed, and the side on which each mark is to be left.

9.2 All marks are rounded to Port.

9.3 Boats are not required to pass through the Start or Finish Lines except when Starting or Finishing.

9.4 When the Blue Flag is displayed no boat shall pass through the finishing line, in either direction, except to finish. Any boat in breach of this SI will be scored DNF without a hearing. This changes *RRS* 63.1, A4.1 and A5.



LOUGH REE YACHT CLUB  
FOUNDED 1770



## 10 MARKS

**10.1** Mark 1 will be a Red Pyramidal Mark

**10.2** Marks 2 & 3, will be Yellow Spherical Marks.

## 11 OBSTRUCTIONS

**11.1** Waterways Ireland Navigation (excluding the green middle ground stake, situated south of Little Yellow Island) shall be regarded as marks on the course and the navigation must be observed except where otherwise indicated on the Course.

## 12 THE START

**12.1** Races will be started using *RRS 26* with the starting signal made five minutes after the warning signal. (*5-4-1-Go*).

**12.2** The Starting Line is, between the **Main Mast**, displaying an Orange Flag, on a Race Committee Vessel at the Starboard End of the line and, at the Port End EITHER, a Staff displaying an Orange Flag in a Race Committee Vessel, OR a White Spherical Buoy.

### 12.3 Flag B procedure

**12.3.1** The Flag B procedure will apply:

- (i) when the Preparatory Signal is Flag P, from 2 minutes before the starting signal until the starting signal.
- (ii) when all other Preparatory Signals are in use, from 2 minutes before the starting signal until 1 minute before the starting signal.

**12.3.2** When the Flag B procedure applies, if any part of a boat's hull is on the course side of the starting line, the Race Committee will attempt to indicate this by displaying Flag B. Flag B will be displayed until the hull of each such boat has been completely on the pre-start side of the starting line or one of its extensions or the Flag B procedure ceases to apply, whichever is earlier.

**12.3.3** Failure to display or remove Flag B will not be grounds for a request for redress. This changes *RRS 62.1(a)*.

**12.4** A boat starting later than 5 minutes after her starting signal will be scored "Did Not Start", without a hearing. This changes *RRS A4* and *A5*.



LOUGH REE YACHT CLUB  
FOUNDED 1770



### 13 CHANGE OF-THE NEXT LEG OF THE COURSE

- 13.1** To change the next leg of the course, the Race Committee will move the original mark (or move the finishing line) as soon as is practicable.
- 13.2** Minor changes of the next leg of the course may be made without any signals before the leading boat has begun the leg. Any mark to be rounded may be relocated to maintain the original course configuration. This changes *RRS 33*.
- 13.3** When a Race Committee Vessel displays Code Flag F at a mark or gate and makes repeated sound signals, boats shall pass between the vessel displaying Flag F and the nearby mark, leaving the mark on the required side, or passing through the gate, and then sail to the Committee Vessel finish line to finish.

### 14 THE FINISH

- 14.1** The finish will be between a Race Committee Vessel's Main Mast displaying a Blue Flag at the Starboard end and the course side of the Finishing Mark, a black spherical buoy at the port end.
- 14.2**  
In addition to the procedure for shortening course in *RRS 32*, the Race Committee may also award a finishing score to a boat that is still racing by displaying to her from a committee vessel (which may be in motion) Flag W with one sound signal. A boat so notified is no longer required to sail the course (changing *RRS 28.1*) and shall stop racing and return to the starting area or return ashore if there is no more racing.  
A finishing score under this SI will be the score she would have received had she sailed the course and finished within any time limit, without gaining or losing any place. However, when two or more boats that are overlapped are notified, they will be scored as if they were tied. The decision by the Race Committee to use this procedure or not to use it shall not be grounds for requesting redress.  
This changes *RRS 60.1(b)*.

### 15 PENALTY SYSTEM

- 15.1** *RRS* Appendix P, Special Procedures for *RRS 42* will apply, except that *RRS P2.3* does not apply and *RRS P2.2* is changed so that it applies to any penalty after the first one.



## 16 TIME LIMITS AND TARGET TIMES

- 16.1 The Target Time for each race is 45 minutes.
- 16.2 Failure to meet the Target Time will not be grounds for redress. This changes *RRS* 62.1(a).
- 16.3 The Time Limit for the first boat to sail the course and finish is 60 minutes.
- 16.4 Any boat not finishing within 10 minutes after the first boat to sail the course and finish will be scored as DNF without a hearing. This changes *RRS* 35 and A5.

## 17 HEARING REQUESTS

- 17.1 A boat intending to protest shall, where possible, inform the Race Committee as soon as is reasonably possible after finishing.
- 17.2 The Protest Time limit is 60 minutes after the last boat finishes the last race of the day or the Race Committee signals "*no more racing today*", whichever is later.
- 17.3 Hearing request forms are available at the Race Office in LRYC.
- 17.4 Duly completed forms shall be delivered there within the Protest Time Limit.
- 17.5 Notices to competitors will be posted, no later than 30 minutes after the Protest Time Limit, of hearings in which they are parties or named as witnesses.
- 17.6 Notices of protests by the Race Committee or Jury will be posted on the Official Regatta Notice Board to inform boats under *RRS* 61.1(b).
- 17.7 A boat may not protest another boat for breaking SIs 16, 19, and 20 This changes *RRS* 60.1.
- 17.8 Appendix T, Arbitration, may apply. If a party, having been informed that an Arbitration Meeting will be held, does not attend, other parties may take a Post-Race Penalty at any time until the Protest Committee has completed taking evidence. This changes *RRS* Appendix T1(a).
- 17.9 *RRS* 66 is changed by adding this sentence: "On the last day of racing, a party to a hearing may ask for a reopening no later than 15 minutes after being informed of the decision".



## 18 SCORING

18.6 Two races will constitute a series in the event.

18.7 (a) When fewer than four races have been completed, a boat's score will be the total of her race scores.

(b) when 4 or more races have been completed, a boat's series score will be the total of her race scores excluding her worst score.

## 19 SAFETY REGULATIONS

19.6 *RRS 40.1* Personal Flotation Devices (PFDs) applies: "Each Competitor shall wear a PFD except briefly while changing or adjusting clothing or personal equipment. Wet suits & Dry suits are not PFDs."

## 20 REPLACEMENT OF CREW OR EQUIPMENT

20.6 Substitution of competitors will not be allowed without prior written approval of the Race Committee.

20.7 Substitution of damaged or lost equipment will not be allowed unless approved by the Race Committee.

Requests for substitution shall be made in writing to the Race Committee at the first reasonable opportunity.

20.8 Sail numbers other than those required by *RRS G1.1(c)* will only be allowed in exceptional circumstances and with the written permission of the Race Committee. Under no circumstances will a boat be permitted to use the sail number of another boat that is racing. This changes *RRS 77*.

## 21 EQUIPMENT AND MEASUREMENT CHECKS

21.6 A boat or equipment may be inspected at any time for compliance with the 420 Class Rules and SIs. On the water, a boat may be instructed by a Race Committee Vessel to proceed immediately to a designated area for inspection.



LOUGH REE YACHT CLUB  
FOUNDED 1770



22 Not used

23 Not used

## 24 SUPPORT BOATS

24.6 Team leaders, coaches and other support personnel shall remain more than 100 metres from the course area from the time of the preparatory signal until all boats have finished or the Race Committee signals a postponement, general recall or abandonment.

24.7 When afloat, all persons on a support vessel shall wear a personal flotation device at all times. When the engine is running the support vessel driver shall use a kill cord at all times.

## 25 WASTE DISPOSAL

25.6 Waste may be deposited on support and official boats providing this does not interfere with race management. Please ensure waste generated on boats is made secure in the event of a capsize.

25.7 Waste receptacles (bins) will be located around the Club, please ensure their appropriate use.

26 Not used.

27 Not used.

28 Not used.

## 29 PRIZES

29.6 There will be a prize for the first three boats in the Gold Fleet and the first three boats in the Silver Fleet. There may be other prizes which will be awarded at the discretion of the OA.

29.7 Prizegiving will be at the LRYC Club House after racing on completion of the event.

## 30 RISK STATEMENT

30.6 RRS 3 states: ***'The responsibility for a boat's decision to participate in a race or to continue to race is hers alone.'*** By participating in this event each competitor agrees and acknowledges that sailing is a potentially dangerous activity with inherent risks. These risks include strong winds and rough seas, sudden changes in weather, failure of equipment, boat handling errors, poor seamanship by other boats, loss of balance on an unstable platform and fatigue resulting in increased risk of injury. **Inherent in the sport of sailing is the risk of permanent, catastrophic injury or death by drowning, trauma, hypothermia or other causes.**





LOUGH REE YACHT CLUB  
FOUNDED 1770



30.7 LRYC, The Association and all their officers, members and volunteers, and event sponsors and patrons, do not accept liability for loss of life or property, or personal injury or damage caused by or arising out of the event. Competitors take part in the event at their own risk.

### 31 INSURANCE

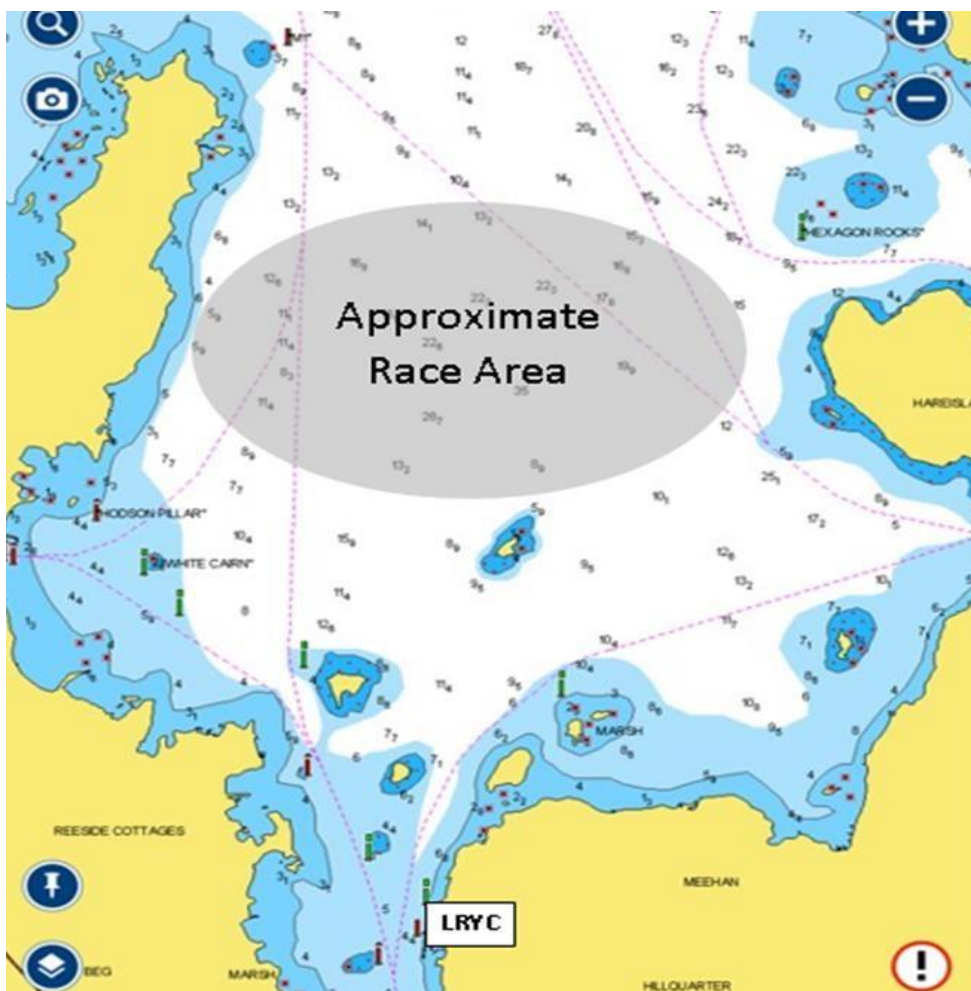
Each participating boat shall be insured with valid third-party liability insurance with a minimum cover of €3 million per event or the equivalent.

#### Further Information:

LRYC: PRO Garrett Leech

Email: [garrettleech@gmail.com](mailto:garrettleech@gmail.com) Mobile: 086 6738102

### Addendum 1





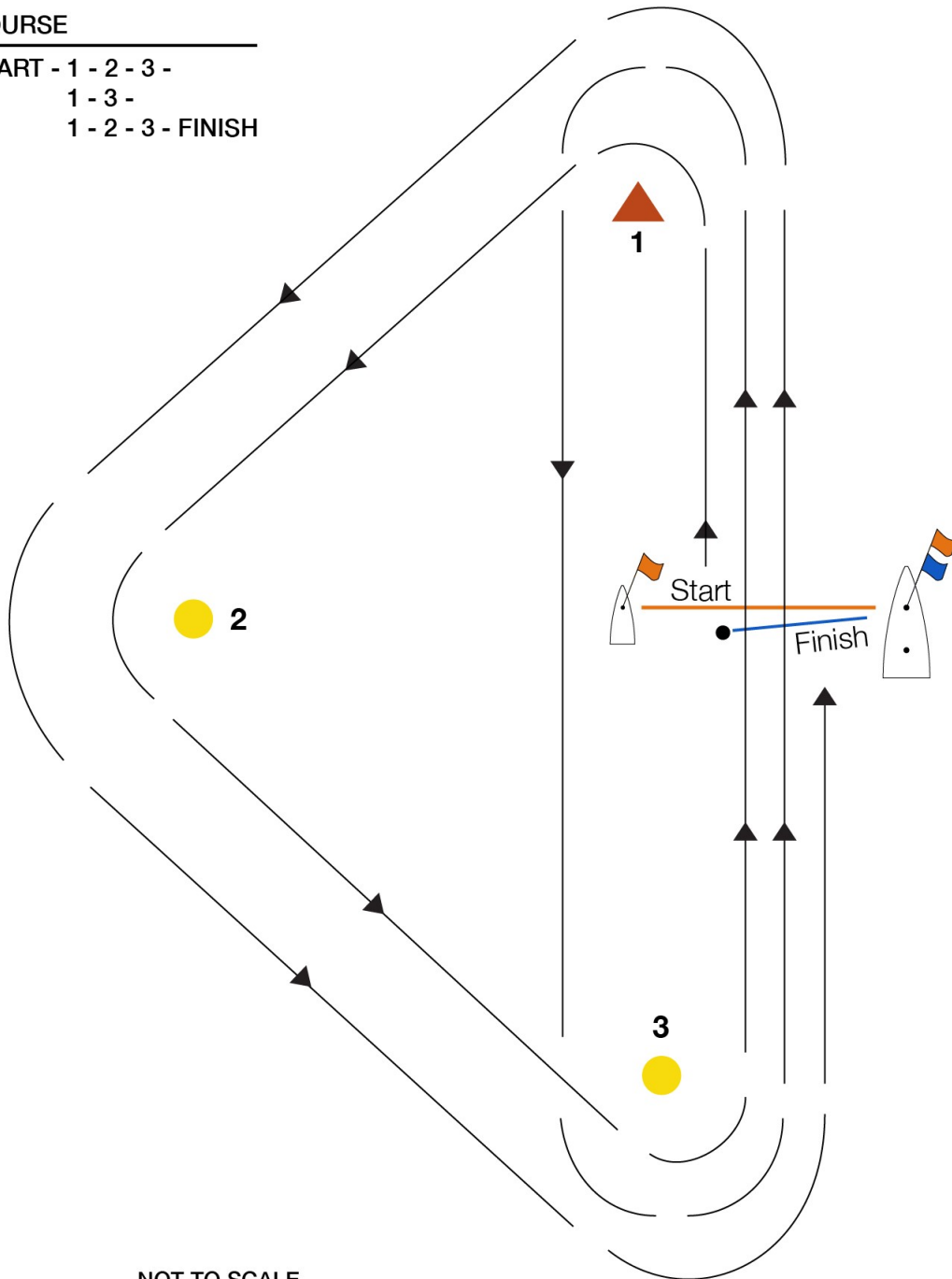
LOUGH REE YACHT CLUB  
FOUNDED 1770



## ADDENDUM B ----- COURSE

### COURSE

START - 1 - 2 - 3 -  
1 - 3 -  
1 - 2 - 3 - FINISH



NOT TO SCALE