



DOUBLE REE

IRELAND'S PREMIER YOUTH DOUBLE-HANDED REGATTA

Venue: Ballyglass, Athlone, Ireland N37 K257

NOTICE OF RACE (NoR)

The notation [NP] in a rule means that a boat may not protest another boat for breaking that rule. This changes *RRS 60.1(a)*.

The notation [DP] in a rule means that the penalty for a breach of that rule may, at the discretion of the protest committee, be less than disqualification.

The Organising Authority (OA) for this event is Lough Ree Yacht Club (LRYC) in association with the Irish Associations of the Mirror, RS Feva, 29er and 420 Classes.

Four Championships featuring

| Mirrors | Fevas | 420s | 29ers |
|-----------------------|----------------------|-----------------------|----------------------|
| National Championship | Midland Championship | Leinster Championship | Western Championship |
| 19-21 July | 20-21 July | 20-21 July | 20-21 July |

1. RULES

- 1.1 The event is governed by the *rules as defined in The Racing Rules of Sailing (RRS)*.
- 1.2 All relevant Class Rules will apply unless any of these are changed by this NoR or the Sailing Instructions (SI).
- 1.3 [DP] [NP] These rules are contingent upon COVID-19 and other potential disruptions to the event, Govt., I.S. and LRYC Rules and Guidelines in place at the time of the Regatta. Protocols relating to any such disruptions may be published at any time and will state if they have a status of a rule.

2. SAILING INSTRUCTIONS (SIs)

- 2.1 The SIs will be available on or before 18th July 2024.
- 2.2 In the event of a conflict with the NoR or another Event Document, the SIs shall prevail. This changes *RRS 63.7*.

3. COMMUNICATIONS

- 3.1 Notices will be posted on the Notice Window situated at the front of the clubhouse and on the event WhatsApp Group which can be joined by using the link [HERE](#) or by scanning the Event QR code.
- 3.2 [DP] From the first warning signal until the end of the last race of the day, except in an emergency, a boat shall not make voice or data transmissions and shall not receive voice or data communication that is not available to all boats. This includes using mobile telephones.



4. ELIGIBILITY AND ENTRY

- 4.1 The event is open to:
- | | |
|----------------|------------------------------|
| Mirrors | <i>National Championship</i> |
| Fevas | <i>Midland Championship</i> |
| 420s | <i>Leinster Championship</i> |
| 29ers | <i>Western Championship</i> |
- 4.2 All boats must have crew be registered as members in their respective associations.
- 4.3 Competitors under the age of 18 years of age, on the first day of the event, shall ensure that their Parent/Guardian Consent form has been signed by a responsible adult and submitted at registration.
- 4.4 **Boats may ENTER by visiting [HERE](#).**
- 4.5 Before being accepted as an entry in the event, all registration requirements and relevant fees shall be paid.
- 4.6 A Late Entry may be accepted at the OA's absolute discretion. The OA will be under no obligation to accept any late entry.

4. FEES

| Class | Early Entry Fee (Until 23:59 Friday 12th July) | Entry Fee (Until 23:59 Thursday 18th July) |
|--------|---|---|
| Mirror | €90.00 | €100.00 |
| Fevas | €70.00 | €80.00 |
| 420s | €70.00 | €80.00 |
| 29ers | €70.00 | €80.00 |



6. CREW LIMITATIONS

6.1 As per Class Rules.

7. ADVERTISING

7.1 Advertising is restricted to Category C.

7.2 Boats may be required to display advertising chosen and supplied by the OA.

8. QUALIFYING SERIES AND FINAL SERIES *(Not applicable to this event.)*

9. SCHEDULE

Races Scheduled

9.1 Nine (9) races are scheduled for the Mirror Class.
Eight (8) races are scheduled for the 29er Class.
Six (6) races are scheduled for the Feva & 420 Classes.

9.2 The schedule may, at the discretion of the OA, be amended, including bringing race/s forward, except that there will be no race started before the scheduled time of the first race in the series for any specific class.

9.3 The intention is that there will be no more than three races a day. However, additional races may be sailed either in advance or arrears to complete the programme if weather or other reasons dictate.

9.4 Schedule Table

| Date | Class(s) | | Time |
|--------------------|--------------------|--------------------|-------------------|
| Thursday 18th July | Mirrors | Registration | 19:00 - 21:00 |
| Friday 19th July | Mirrors | Registration | 09:00 - 10:25 |
| | Mirrors | Briefing | 10:30 |
| | Mirrors | 1st Warning Signal | 11:55 |
| | Other Classes | Registration | 19:00 - 21:00 |
| Saturday 20th July | 29er, Fevas & 420s | Registration | 09:00 - 10:25 |
| | All classes | Briefing | 10:30 |
| | All classes | 1st Warning Signal | 11:55 |
| Sunday 21st July | All classes | 1st Warning Signal | 10:25 |
| | All classes | Prize-giving | ASAP after racing |

9.5 No warning signal will be made for any race after 15:00 on Sunday 21st.

10. [DP] EQUIPMENT INSPECTION

10.1 If required by their respective Class Association, each boat may be asked to produce a valid measurement certificate at registration

10.2 Boats shall be available for equipment inspection.

10.3 Boats may be inspected at any time.

11. CLOTHING AND EQUIPMENT

- 11.1 All competitors shall always wear adequate personal flotation devices when afloat, except briefly while changing or adjusting clothing or personal equipment. Dry suits and wet suits are not adequate personal flotation devices. This changes *RRS 40*.

12. VENUE

- 12.1 Racing areas will be in Lower Lough Ree and further described in the SIs.
- 12.2 The preferred Approximate Racing Area is shown in Addendum 1.

13. COURSES

- 13.1 Courses will be as described in the SIs.

14. PENALTIES

- 14.1 Penalties as per *RRS* unless amended in the SIs.

15. SCORING

- 15.1 Three race/s are required to be completed to constitute a series.
- 15.2 When fewer than four races have been completed, a boat's series score will be the total of her race scores. This changes *RRS A2*.
- 15.3 When from four to seven races have been completed, a boat's series score will be the total of her race scores excluding her worst score.
- 15.4 When eight or nine races have been completed, a boat's series score will be the total of her race scores excluding her two worst scores.

16. SUPPORT PERSON VESSELS *(Not applicable to this event.)*

17. CHARTERED OR LOANED BOATS *(Not applicable to this event.)*

18. [DP] [NP] BERTHING

- 18.1 Boats shall be berthed in their allocated areas.
Please obey instructions from the beachmaster/s.

19. [DP] HAUL OUT RESTRICTIONS *(Not applicable to this event.)*

20. DIVING EQUIPMENT AND PLASTIC POOLS *(Not applicable to this event.)*

21. DATA PROTECTION

21.1 MEDIA WAIVER / RIGHT TO USE NAMES AND LIKENESSES

Competitors automatically grant consent to the OA without payment, the right to make, use, and show any motion pictures, still pictures, and live, taped, or filmed television of, or relating to the event, before, during, and in results and to license the use of their name, age category, club & boat detail, comments, photographs and likenesses as it sees fit for promotion of the Club & Events both on the LRYC, RS Feva, Mirror, 420 and 29er websites and in other publications. The OA reserves the right to use or license the use of any images and sound recordings during the event free of charge.

- 21.2 The OA will use personal data to administer the event.

22. RISK STATEMENT AND DISCLAIMER OF LIABILITY

22.1 *RRS 3* states: 'The responsibility for a boat's decision to participate in a race or to continue to race is hers alone.' By participating in this event each competitor agrees and acknowledges that sailing is a potentially dangerous activity with inherent risks. These risks include strong winds and rough seas, sudden changes in weather, failure of equipment, boat handling errors, poor seamanship by other boats, loss of balance on an unstable platform and fatigue resulting in increased risk of injury. Inherent in the sport of sailing is the risk of permanent, catastrophic injury or death by drowning, trauma, hypothermia or other causes.

23 INSURANCE

23.1 All boats shall have third party insurance cover, valid for the duration of the event of not less than €3,000,000.00 (or the equivalent thereof in any other convertible currency) for any accident. By entering owners / competitors are deemed to have made a declaration that they hold such cover.

23.2 Owners / competitors not holding this cover shall withdraw their entry.

24. PRIZES

24.1 Prizes will be given as follows:

For the 29er fleet the prizes are as follows:

First, Second and Third Overall

For the 420 fleet the prizes are as follows:

First, Second and Third Overall.

First, Second and Third in Silver Fleet.

For the Mirror and Feva fleets the prizes are as follows:

First, Second and Third Overall.

First, Second and Third Silver Fleet.

First, Second and Third in Bronze Fleet.

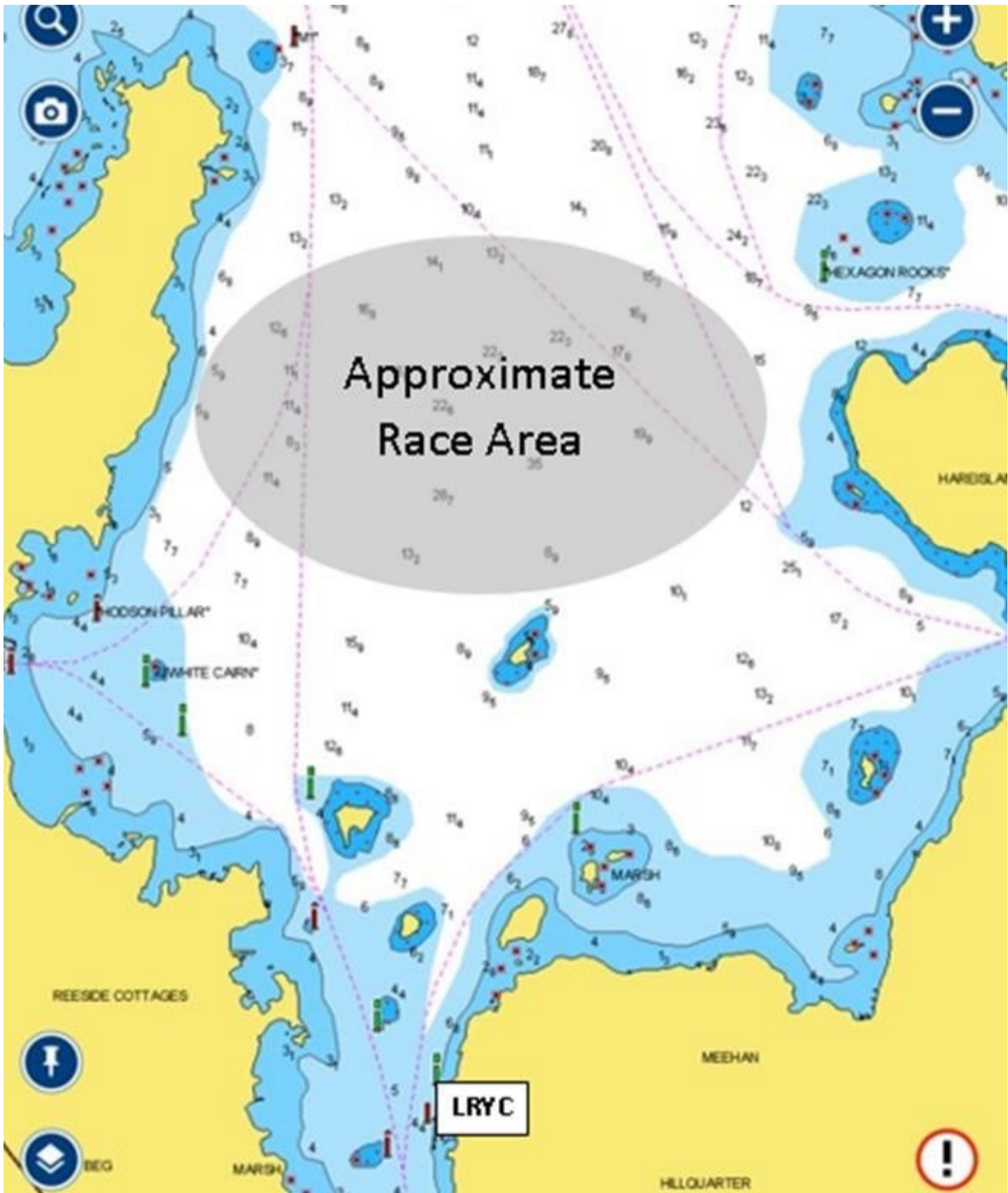
24.2 Prize giving ASAP after racing.

25. MEMBERSHIP

25.1 Competitors are granted temporary membership of LRYC for the duration of the event, subject only to the provisions of the Club rules for withdrawing or withholding such membership.



ADDENDUM 1



END OF NOTICE OF RACE

FURTHER INFORMATION

MEALS

Lunches will not be provided to competitors on the water.

Barbeque will be available on Friday 19th.

Bring your own BBQ

The BBQ will be lit and available for people to prepare their own food.

Plates and cutlery will be available.

An evening meal will be available on Saturday 20th.

It will be necessary to book [HERE](#) in advance as places are limited.

Price €20.00

Details and bookings will be available on the registration page from Monday 1st of July.

Final booking for meals to be received no later than Monday 15th of July.

The Club Bar will be open.

ACCOMMODATION

Excellent camping & shower facilities with parking for Camper Vans, Tents etc. are available at the Club.

Weekend Camping Charges:

Tent €15.00

Camper vans and caravans €30.00

Camping can be booked [HERE](#).

B&B and Hotels are available locally in and around Athlone town.

For further information please contact

John McGonigle +353 87 979 1154

